

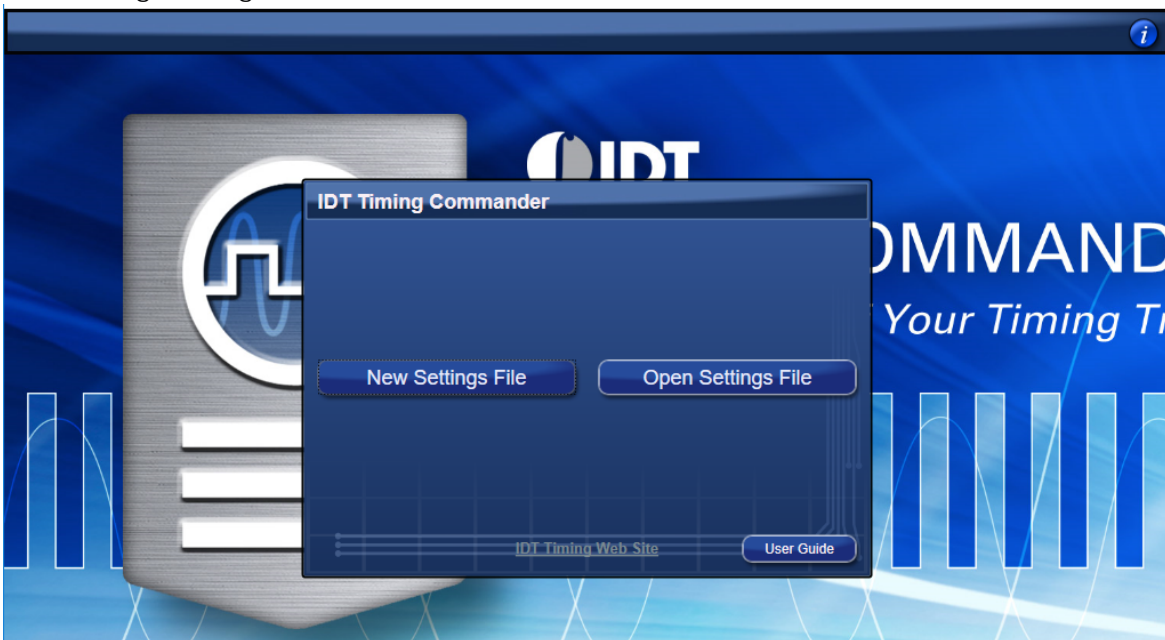
Getting Started

Refer to the [Glossary](#) of terms used in this guide. Follow the steps below to start a new setting or open an existing Settings File and configure the device to meet your timing requirements.

Note: Ensure to install the latest Timing Commander version before proceeding with the next step.

1. Launch Timing Commander GUI – upon launching the software for the first time, you will see the following window:

Figure 1. Launching Timing Commander for the First Time



A settings file (.tcs) is a text file where the device input and output requirements are stored. From this window, an existing setting file can be opened to restore a configuration, or a new setting file can be created.

2. Click on “New Setting File” button – a personality file (.tcp) will be requested and can be opened by browsing to the folder where a personality file is stored. Once the personality file is opened (click OK), the following page will be displayed, where the PhiClock plus PCIe Clock Generator product can be selected (see [Figure 2](#)). As soon as the product is selected, a configuration window for the selected product will appear as in [Figure 4](#).

Figure 2. Choosing the Correct PhiClock Clock Generator Part Number

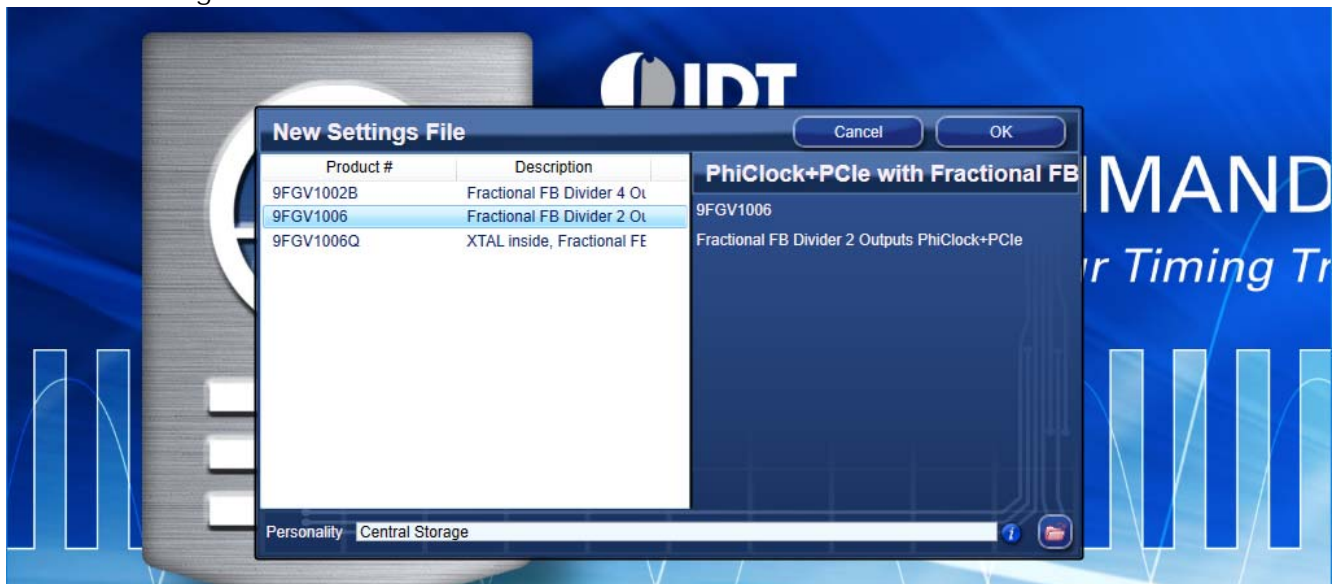
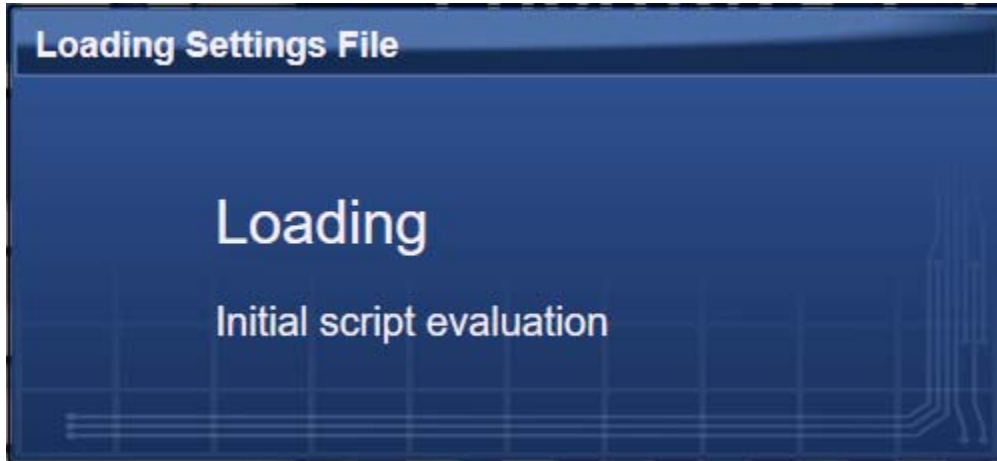


Figure 3. Loading Settings File Window



Settings File Window Fields and Descriptions

A block diagram is displayed when a Settings File is loaded with a personality of a device. There are differential areas in the block diagram, as shown in [Figure 4](#), along with detailed explanations of the labels in [Table 1](#).

Figure 4. 9FGV1006 Settings File Window Descriptions

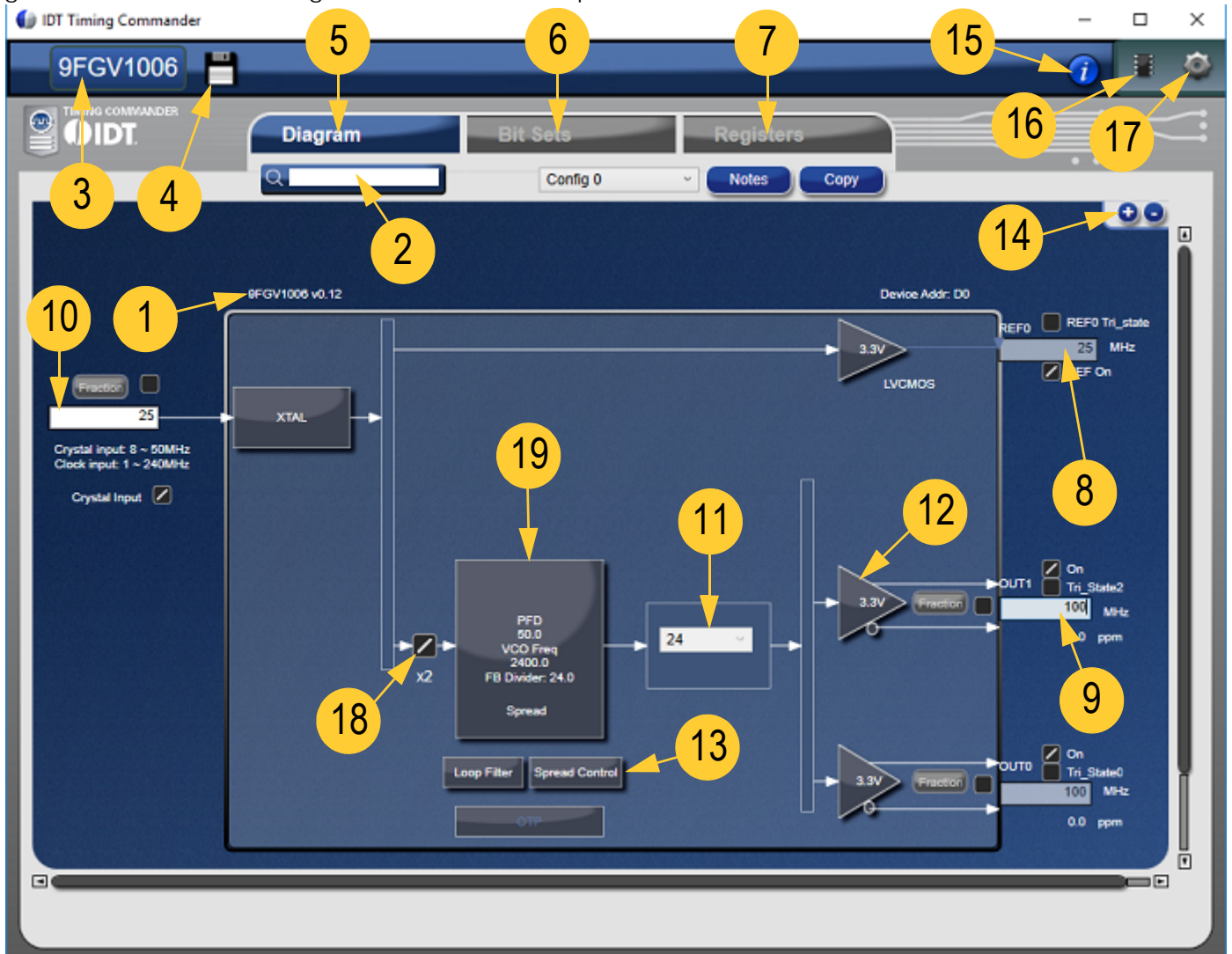


Table 1. 9FGV1006 Settings File Window Label Descriptions

Label Number	Timing Commander Field Name	Description
0	9FGV1006	The detailed block diagram of the device.
1	9FGV1006 v0.nn	Personality revision is n.nn.
2	Search Box	This is used to search for items on the screen.
3	9FGV1006	Part number corresponding to the personality being used.
4	Save	Enable to save the current configuration as a .tcs file.
5	Diagram	Default tab.
6	Bit Sets	Tab that shows all bit set used in this personality for 9FGV1006.
7	Registers	Register table tab shows all register bits settings and address.
8	Enable Check Box	If checked it enables the corresponding outputs.
9	Output Frequency	Field to enter the output frequencies.
10	Source Frequency	Field to enter the source frequency either as crystal or input clock.
11	Integer Divider	Integer divider factor.
12	VDDO	Drop down button to enter the voltage for each output.
13	Spread Spectrum	Enable or disable the spread spectrum feature on the selected outputs.
14	+ -	Enable to zoom in or zoom out the tab.
15	<i>i</i>	Display information about timing commander.
16	Connect	Enable the connection to the evaluation board.
17	Settings	Setting window for I ² C connection.
18	x2	Input clock doubler.
19	VCO	VCO frequency settings.

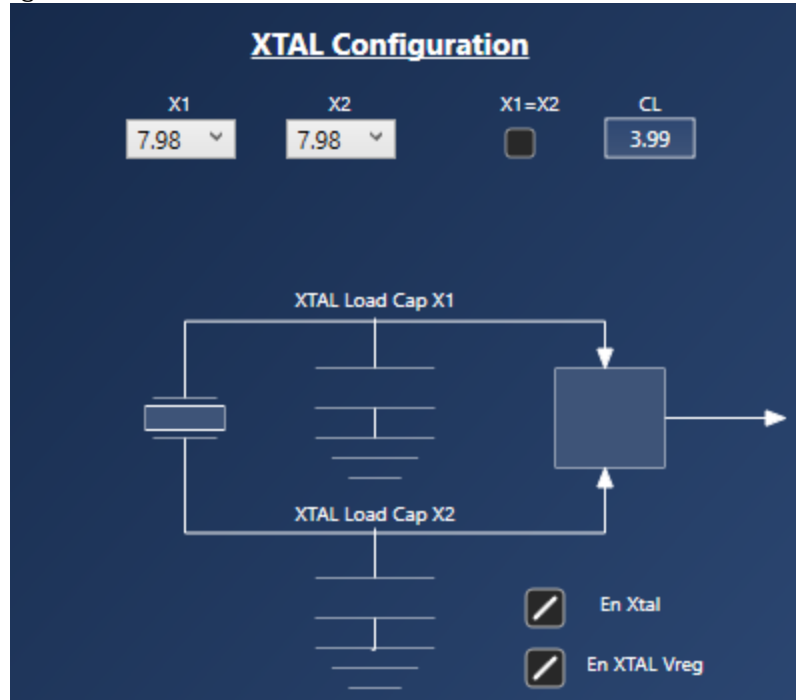
Input Clock Selection

Input source can be selected between a crystal and an external reference clock. The frequency can be entered under “Source Frequency”. There are two source options – crystal and clock. The maximum input frequency the crystal supports is 50MHz, and maximum input frequency from clock should be 200MHz. The “Source Frequency” (see [Figure 5](#)) can be entered as a fraction by clicking on the *Fraction* check box.

Figure 5. Input Clock Reference Selection



Figure 6. Crystal Tuning



If the source is a crystal, clicking the XTAL block displays the XTAL Configuration popup window (see [Figure 6](#)), and the frequency of the crystal can be tuned by adding a total internal load capacitance of 4–14pF between X1 and X2.

Output Selection and Configuration

There are 2 copies of output pairs from the PLL, and two single-ended REF outputs. Clicking on one of the output drivers displays the “Output Clock Configuration” popup (see [Figure 7](#)), where all outputs can be enabled and configured individually or by applying global settings by clicking on the “Apply global settings to all outputs” button. [Table 2](#) outlines the signal types, while [Table 3](#) summarizes the output voltages available for various output types. [Table 3](#) also summarizes the default settings upon power-up. There is an option for the LP-HCSL outputs to be configured as PCIe outputs by selecting the “Set PCIeSig Default” button.

Figure 7. Output Clock Configuration Window

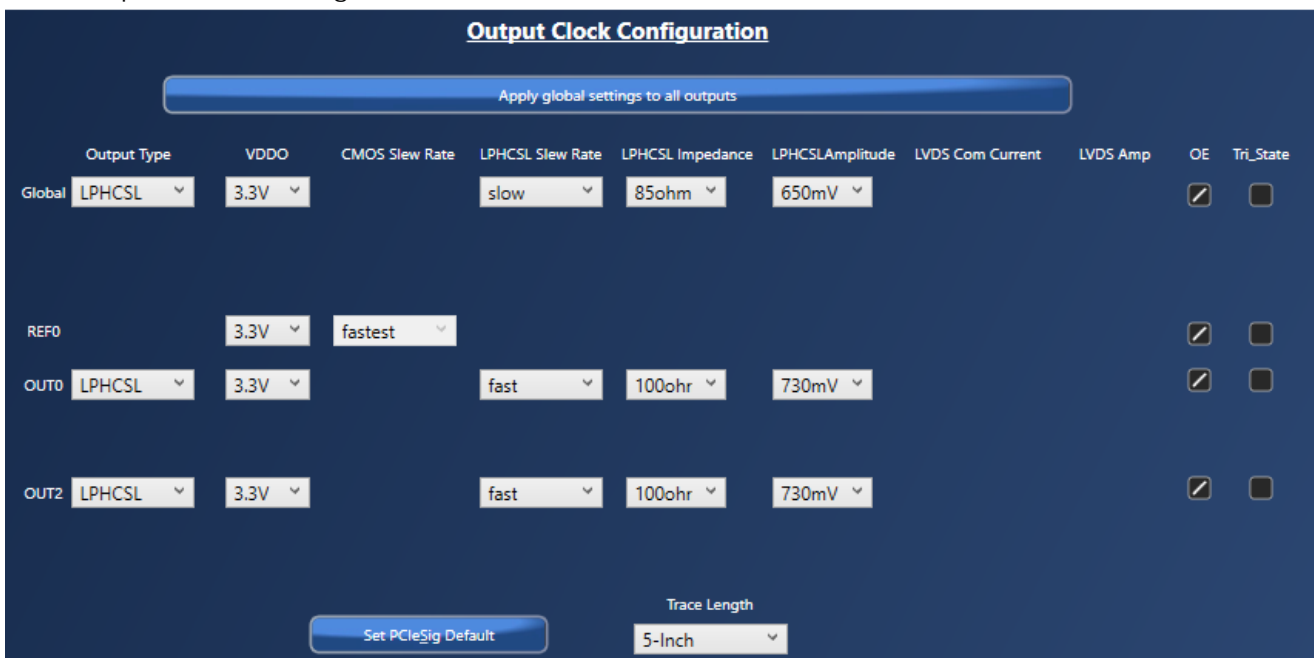


Table 2. Output – Signal Type

Signal Type	Number of Outputs	Output Type
LVC MOS	1	Single-ended for REF0/REF1.
LVC MOS1	1	Single-ended output.
LVC MOSX2	2	Two copies of the True terminal from OUT0–OUT3.
LVC MOSD	2	Two copies of the True and Complement from OUT0–OUT3.
LVDS	2	Differential OUT0–OUT3.
LP-HCSL	2	Differential OUT0–OUT3.

Table 3. Output – VDDO

VDDO (V)	Available for Output Types
1.8	All differential and single-ended output types.
2.5	All differential and single-ended output types.
3.3	All differential and single-ended output types.

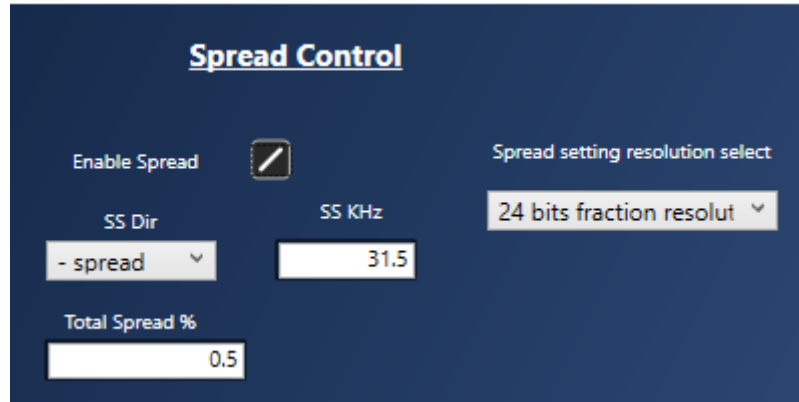
Table 4. Factory Defaults

Output Type	Frequency (MHz)	Signal Type	LP-HCSL Impedance	VDDO (V)
Ref Output	25	LVC MOS		3.3
Differential 0	100	LP-HCSL	100Ω	3.3
Differential 1	100	LP-HCSL	100Ω	3.3

Spread Spectrum

Clicking on the “FOD” block displays the *Spread Control* settings window (see Figure 8). The “Enable Spread” button enables or disables the spread spectrum as required by the user. Note that the spread spectrum is only available for differential outputs OUT0–OUT1. The “Total Spread %” field accepts values from 0 to 0.5%, while the “SS Dir” and “SS KHz” fields are used to set the spread direction (center or down) and spread modulation frequency (31.5kHz) respectively.

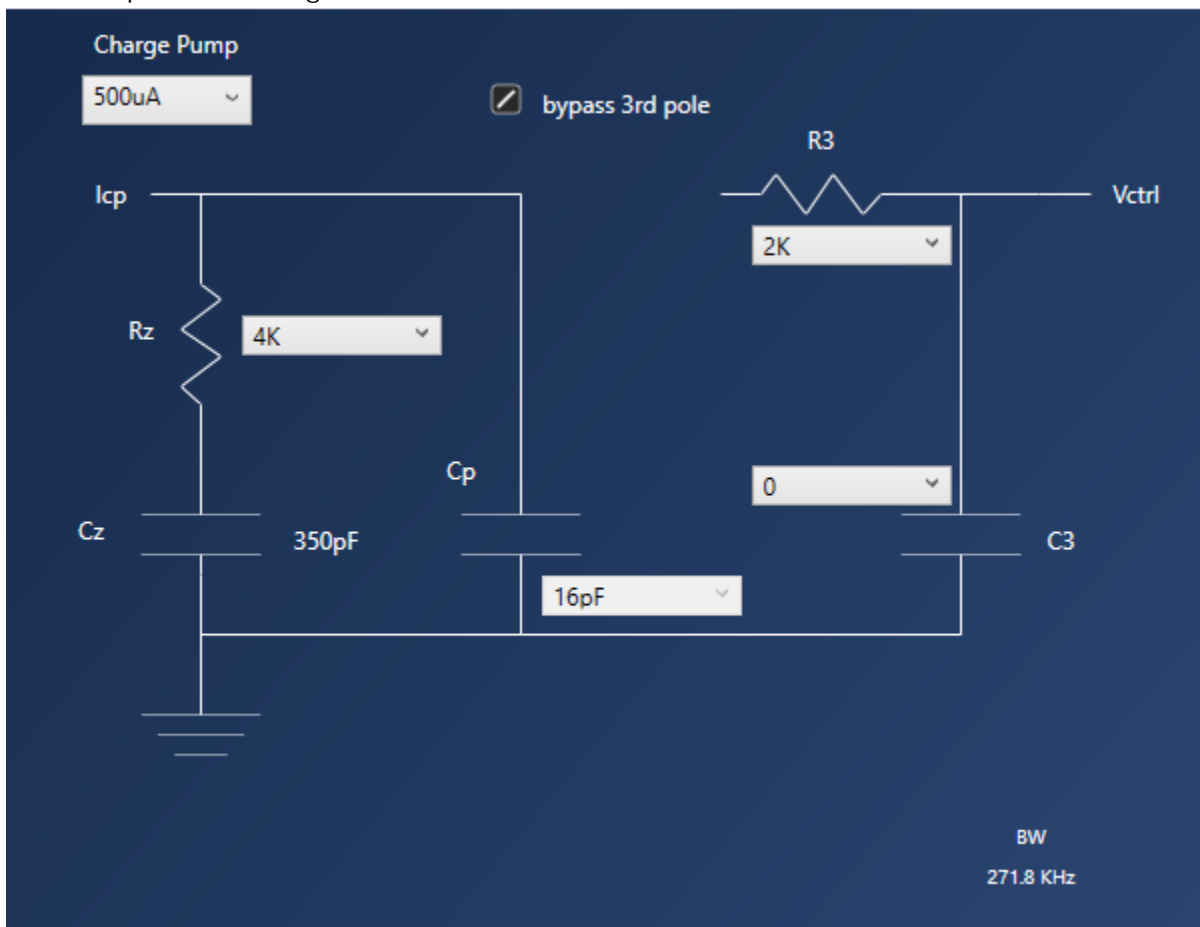
Figure 8. Spread Control Window



PLL Loop Filter

Clicking on the “Loop Filter” block displays the Loop Filter Configuration window. The charge pump current, R_z , and 3rd pole filter settings can be trimmed to optimize the PLL loop parameters and bandwidth.

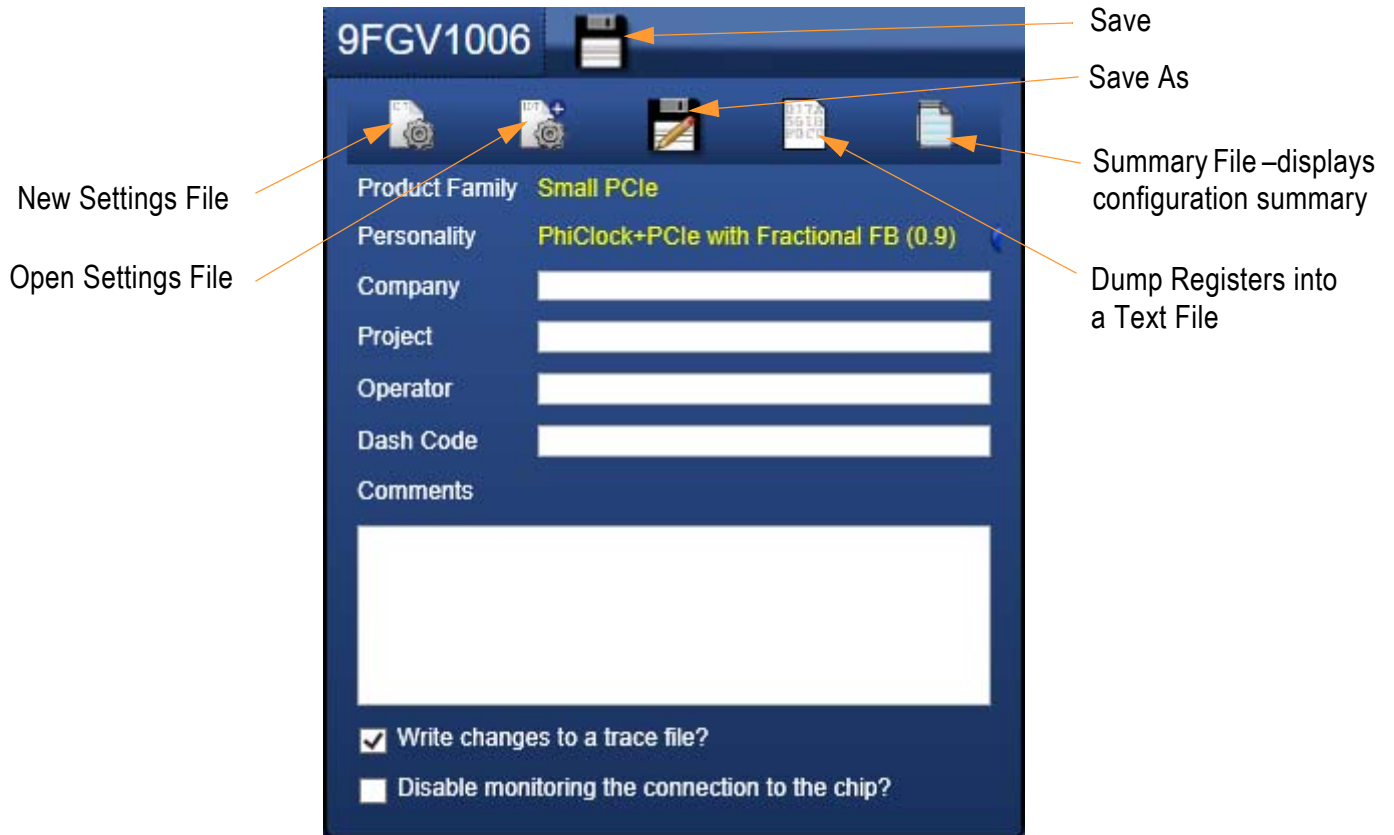
Figure 9. PLL Loop Filter Configuration Window



Entering Project Details

By clicking on the 9FGV1006 part number, a window displays tasks that can be performed such as opening settings files, new settings file, save as, and entering project details. These should be filled out for proper documentation.

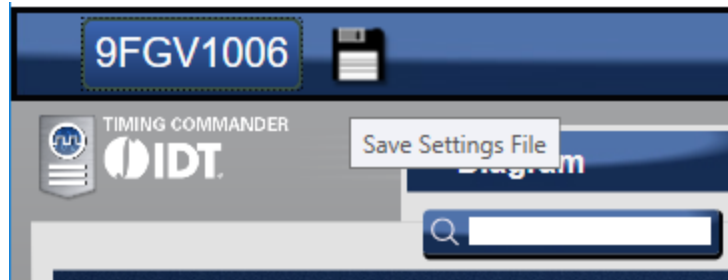
Figure 10. Project Details Information and File Tools Window



Save the Settings File

After the configuration is complete, click on the disk symbol at the upper left corner to save the setting file (see [Figure 11](#)).

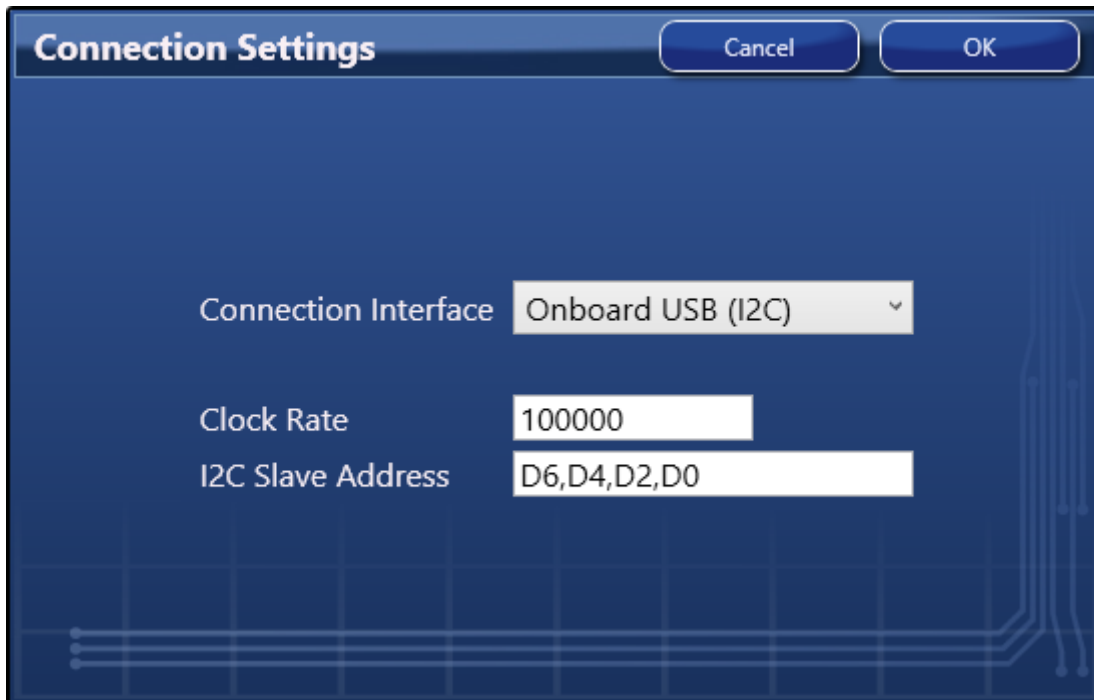
Figure 11. Save the Settings File Window



Connecting to the Chip

If a 9FGV1006 evaluation board is connected, the settings can be written to the chip registers through the I²C interface. In the GUI software, the connection to the chip can be made by clicking on the round button at upper right corner of the GUI (see [Figure 4](#), label 17). The "Connections Settings" window displays as shown in [Figure 12](#).

Figure 12. Connection Settings Window for Connecting to the Chip



Use the default values in *Connection Settings* window and click OK to close it. Click the chip symbol in the upper right corner (see [Figure 4](#), label 16) to start the read/write command. While connecting, the read/write indicators are red, and when connected and functioning, the indicators change from red to green with “read” or “write” indicators (see [Figure 13](#)). The arrow pointing out of the chip means “reading from the chip”; the arrow pointing into the chip means “writing to the chip”.

To read from the device, ensure that the device configuration is written at least once and the proper configuration is selected for read back.

Figure 13. Read/Write to Device Registers Symbols



OTP Programming

When a configuration is ready for programming, the chip can be programmed directly within the Timing Commander GUI software.

1. Before starting the OTP burn process, it is important to disable monitoring connection to the chip as shown in [Figure 15](#).
2. Set the Auto Poll to “NO” as shown in [Figure 16](#).
3. Click on the OTP button to display the “OTP” programming window (see [Figure 14](#)).
4. Within this window, select the configurations needed to OTP. It can OTP one configuration at a time, but the config0 must be OTP at the first time.
5. Disconnect the OTP_VPP pin on the Evaluation/Programming board from V_{DD} and connect to 6V. See [Figure 16](#).
6. Click “Burn 4 Cfgs” button.
7. To complete the OTP process, remove 6V V_{DD} and plug in the 3.3V V_{DD} jumper.

Figure 14. OTP Programming Window



Figure 15. Disable Monitoring the Connection to the Chip



Figure 16. Setting Auto Poll to "No"



Glossary

IDT Timing Commander Software – Executable file that will execute a personality, connect to a timing chip on an evaluation board, and read or write settings files.

Personality – Encrypted file with an extension .tcp. Used by IDT Timing Commander software to determine the characteristics for a specific family of timing devices. A personality file may refer to a single device or an entire family of similar devices. Contact IDT to obtain the most current version of a personality file for the devices of interest.

Settings File – Text file with extension .tcs. Written or read by IDT Timing Commander software to save or restore a particular setup for a specific version of a device personality and version of IDT Timing Commander software. Settings files created with newer versions of IDT Timing Commander software or a device personality may not be compatible when read into older version of IDT Timing Commander software, or, if an older version of the personality is installed. Forward compatibility (older settings files read by newer software and/or personality) will be maintained.

Bit Set – A single variable stored within the registers of the device. A bit set may use only part of a register or many span multiple registers, but is thought of as a single field. For example, a 20-bit output divider ratio may be defined as a single bit set of length 20-bits, but may be stored in Register 0x4A, bits [3:0], Register 0x4B, bits [7:0] and Register 0x4c, bits [7:0].

Metadata – Variable used within the personality, but not stored directly in device registers. For example, an output frequency is generally not stored anywhere in a device's registers, but must be known to calculate register settings for the device with which we achieve those frequencies.

Tooltip – Context-sensitive pop-up that appears briefly as the mouse pointer hovers over an icon or element on the screen. These are intended to provide useful information about the specific item being pointed to.

Value – When referring to any field that the user can edit, Value means the current internally-represented value of that field.

Default Value – When referring to any field that the user can edit, Default Value means the value recommended by the personality for that field, taking into account the settings in other fields in the device. Changes of other fields may result in a change to the Default Value. Whenever a field is unlocked, Default Value = Value. Only by locking a field can a user set a field to a value other than the Default Value or prevent a field's Value from changing if Default Value changes.

Display Value – A field may be controlled by a personality to display its Value or Default Value in a more meaningful way. For example, if the value is defined in MHz, but the actual value is 0.008MHz, the personality may choose to display this to the user as 8kHz. In another example, if a bit set represents a divider ratio that can only be an even number and so does not implement the least significant bit, the personality may choose to show a divider ratio of 2 when the bit set value is 1 (i.e., 1 increment of divide-by-2).

Revision History

Revision Date	Description of Change
February 23, 2018	<ul style="list-style-type: none"> ▪ Corrected minor typos throughout. ▪ Updated OTP Programming section. ▪ Updated images for figures 4 and 5. ▪ Moved Glossary to be the last section of the document.
November 20, 2017	Initial release.



Corporate Headquarters
 6024 Silver Creek Valley Road
 San Jose, CA 95138 USA
www.IDT.com

Sales
 1-800-345-7015 or 408-284-8200
 Fax: 408-284-2775
www.IDT.com/go/sales

Tech Support
www.IDT.com/go/support

DISCLAIMER Integrated Device Technology, Inc. (IDT) and its affiliated companies (herein referred to as "IDT") reserve the right to modify the products and/or specifications described herein at any time, without notice, at IDT's sole discretion. Performance specifications and operating parameters of the described products are determined in an independent state and are not guaranteed to perform the same way when installed in customer products. The information contained herein is provided without representation or warranty of any kind, whether express or implied, including, but not limited to, the suitability of IDT's products for any particular purpose, an implied warranty of merchantability, or non-infringement of the intellectual property rights of others. This document is presented only as a guide and does not convey any license under intellectual property rights of IDT or any third parties.

IDT's products are not intended for use in applications involving extreme environmental conditions or in life support systems or similar devices where the failure or malfunction of an IDT product can be reasonably expected to significantly affect the health or safety of users. Anyone using an IDT product in such a manner does so at their own risk, absent an express, written agreement by IDT.

Integrated Device Technology, IDT and the IDT logo are trademarks or registered trademarks of IDT and its subsidiaries in the United States and other countries. Other trademarks used herein are the property of IDT or their respective third party owners. For datasheet type definitions and a glossary of common terms, visit www.idt.com/go/glossary. Integrated Device Technology, Inc.. All rights reserved.